

Traffic Info – Installation & Maintenance Guide

Project:	Traffic Info
State:	DRAFT
Feature Name:	Traffic Info
Document ID:	
Author:	Stuart Coxhead Stuart.coxhead@siemens.com
Department:	Siemens Enterprise Communications
Revision:	1c
Date Created:	14/02/2007
Date Revised:	12/03/2007

This is an unpublished work the copyright in which vests in Siemens Enterprise Communications Limited. All rights reserved.

The information contained herein is confidential and the property of Siemens Enterprise Communications Limited and is supplied without liability for errors or omissions. No part may be reproduced, disclosed or used except as authorised by contract or other written permission. The copyright and the foregoing restriction on reproduction and use extend to all media in which the information may be embodied.

A division of Siemens plc, Registered no: 5903714, England
Registered Office: Siemens House, Oldbury, Bracknell, Berkshire RG12 8FZ, England

HISTORY OF CHANGE

Version	Description	Date
0.1	Extracted from the Traffic_Info_UserGuide.doc - Stuart Coxhead	14/02/2007
1b	Changed versioning scheme. Changed front cover. Changed the introduction and scope paragraphs to be more relevant. - Stuart Coxhead	20/02/2007
1c	Added configuration for OpenStage	10/03/2007
1d	Changes OpenStage software version and corrected minor mistakes	12/03/2007

CONTENTS

1. INTRODUCTION	1
1.1 Necessary Software & Files.....	1
2. SCOPE	1
3. SYSTEM OVERVIEW	2
3.1 Application Architecture	2
3.2 Network.....	2
3.3 Feed Source	2
3.4 Application Server.....	3
3.5 Phone Handsets	3
3.5.1 OptiPoint 410/420	3
3.5.2 OpenStage 60/80.....	3
4. INSTALLATION	4
4.1 Application executable location.....	4
4.2 Installing the server.....	4
4.3 Configuring the Server	4
4.4 Running the Server	5
4.5 Configuring the AGP to run Traffic Info.....	6
4.5.1 OptiPoint 410/420	6
4.5.2 OpenStage 60/80.....	6
5. TROUBLESHOOTING	8
5.1 Traffic Info Checklist	8
6. APPROVALS	9
7. GLOSSARY	9

1. INTRODUCTION

This document is the Installation and Maintenance Guide for the Traffic Info AGP XML application for the OptiPoint 410/420 and OpenStage 60/80 IP Phone models.

The application has been tested and is available as a prototype for demonstration purposes.

Traffic Info brings you up-to-date traffic news straight to your Siemens AGP enabled IP Phone. It allows you to set up your own Filters and Alerts to display and alert you to only the traffic that is relevant to you. It also allows the user to search for traffic in other areas, meaning you always have the chance of avoiding the traffic.

1.1 Necessary Software & Files

- TrafficInfo_Setup.exe – Self extracting executable
- AGP & Build – Platform on the phone
- JRE 1.5 or later is installed.

TrafficInfo_Setup.exe can be found in the IP phone applications folder under

`\vobs\IP_Apps_Pool\Server\Traffic_Info\Traffic_Info_Setup.exe`

2. SCOPE

This document is intended for an administrator installing and setting up the Traffic Info Server application.

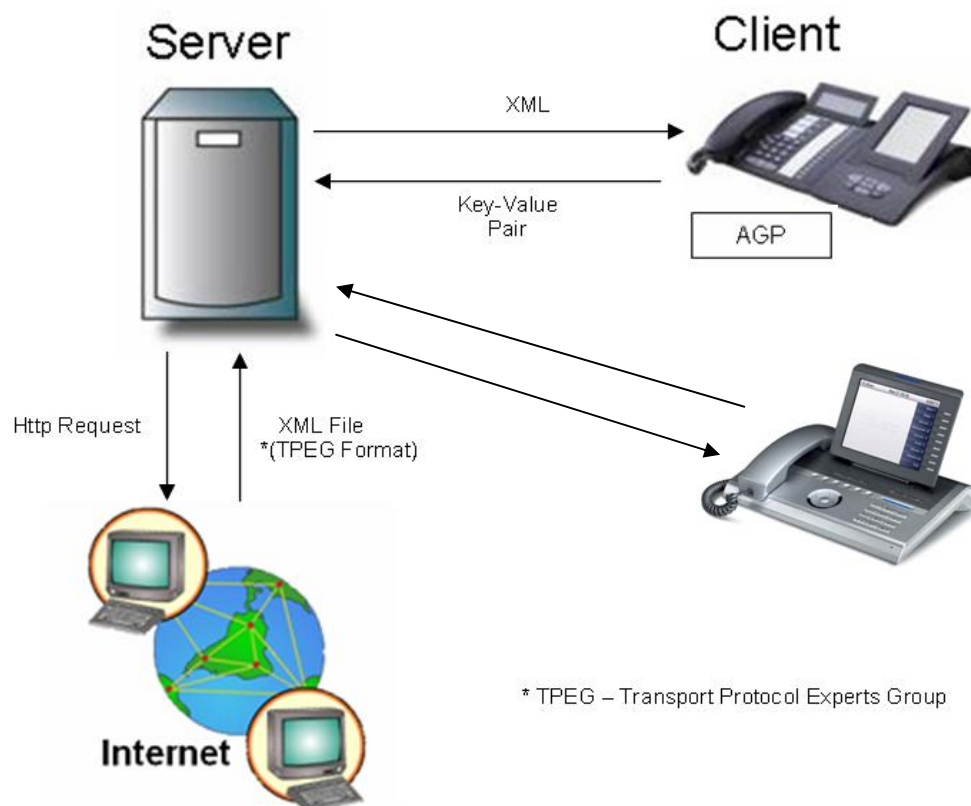
It is assumed the reader has sufficient knowledge about the internet access policy for the network this application is going to be used on, as this application accesses an external source.

This document also provides instructions on configuring the different IP Phone devices to run the Traffic Info application.

The Java Runtime Environment 1.5 or later should be installed prior to this installation.

3. SYSTEM OVERVIEW

3.1 Application Architecture



3.2 Network

For the Traffic Info Server to function, it requires access to a live feed. To do this it will need to access the internet. So if necessary the correct Internet Proxy settings will be needed.

3.3 Feed Source

The Traffic Info Server requires a TPEG traffic feed. TPEG is a new and emerging standard that has been specially designed to encapsulate Travel News in the XML format.

Currently the default feed is the TPEG XML Traffic Feed provided by the BBC. This provides up-to-date traffic information in the UK.

If traffic news is needed for a different location a new source will have to be found.

For more information on the TPEG standard, please see the following website; <http://www.tpeg.org/> and <http://www.bbc.co.uk/travelnews/xml/>

Traffic Info will work with any traffic feed, provided that it is in the TPEG XML standard.

3.4 Application Server

Traffic Info Server has been tested on the following machine.

- Windows XP with Service Pack 2
- P4 3.2GHz Processor with 504Mb RAM.
- 10Mbps Ethernet Connection.
- The Java Runtime Environment 1.5 or later is required.

3.5 Phone Handsets

3.5.1 OptiPoint 410/420

To use the Traffic Info application on an OptiPoint 410/420 it must also have a DSM/APM. It is highly recommended an APM is used due to the much clearer display.

The phone software must be 5.0.25.0032 or later, with a version of the AGP. However the Traffic Info application has been developed and tested on V5R1.34.000 and later with the 2.4 version of the AGP. So a build later than V5R1.34.000 is highly recommended.

Please refer to the OptiPoint documentation on how to install the correct phone firmware.

3.5.2 OpenStage 60/80

The phone software on an OpenStage 60/80 must be V0 R7.9.8 or later in order to run Traffic Info v1.1.

Please refer to the OpenStage documentation on how to install the correct phone firmware.

4. INSTALLATION

The installation can be broken down into the following steps:

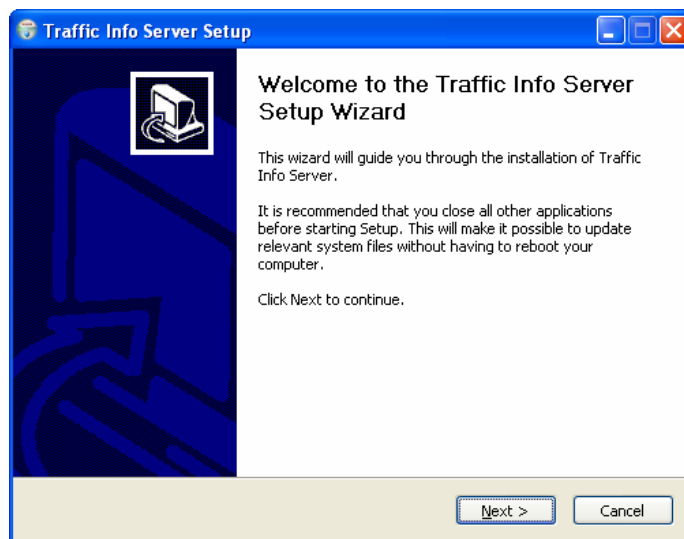
4.1 Application executable location

\\vobs\IP_Apps_Pool\Server\Traffic_Info\Traffic_Info_Setup.exe

4.2 Installing the server

The Traffic Info application comes as one complete package. The program actually works as a web server which accepts incoming requests from the phone and returns appropriate responses. To run the server, follow these steps:

1. Locate the executable file "TrafficInfo_Setup.exe" in the directory given above.
2. Copy the file to a local directory on your PC.
3. Double click TrafficInfo_Setup.exe.
4. You will now be taken through the installation wizard.



5. Follow the instructions to install the Traffic Info Server.
6. The Traffic Info server is now successfully installed

4.3 Configuring the Server

1. Open up a text editor such as Notepad.
2. Then open the following file: \bin\config.cfg which is found in your installation directory.
3. The various settings of the server can be edited here.



```
config.cfg - Notepad
File Edit Format View Help
listenPort=8085
feedSource=http://www.bbc.co.uk/travelnews/tpeg/en/local/rtm/rtm_tpeg.xml
refreshInterval=300000
useProxy=TRUE
proxyAddress=gbntht12015srv.gb002.siemens.net
proxyPortNum=8080
programPath=C:\Program Files\TrafficInfo\
imagesPath=Images\
UserSettings=UserSettings\
Backup=Backup\
log=bin\log.txt
Ln 1, Col 1
```

4. Click File -> Save to save any changes.

Listen Port – This is the port upon the server operates upon. The application listens for incoming phone requests on this port.

Feed Source – This is the URL of the traffic feed. It must be in the TPEG xml format.

Refresh Interval – This is the duration between updates from the traffic feed, in milliseconds. The default is 5minutes this should be configured accordingly depending on how much the traffic list needs to be up-to-date.

Use Proxy – This must be TRUE or FALSE depending on whether you need to use the proxy settings.

Proxy Address – The address of the proxy server needed to access the traffic feed.

Proxy Port – The port number on which the proxy server is operating upon.

All other settings must remain the same as they were created at installation time.

4.4 Running the Server

1. To start the server, Click on the Start Button, and navigate to Traffic Info -> Traffic Info.
2. You will then see the server console screen, like the following:



```
Traffic Info
#####
##### Welcome to Traffic Info v0.1 #####
#####
Running
-
```

3. The Traffic Info application is now running.

4.5 Configuring the AGP to run Traffic Info

4.5.1 OptiPoint 410/420

The AGP allows to user to create multiple programs within the programs menu to different applications. This configuration utility is also available on the web portal. From the admin page see Applications, XML Applications and select new program. You should see the configuration utility as shown.

The screenshot shows a web browser window titled 'optiPoint410Advance Home Page - Siemens Com'. The address bar shows 'https://137.223.238.61/'. The page header includes the Siemens logo and 'optiPoint410Advance' with IP address 137.223.238.61 and Tel: 4207. Below the header is a 'Home Page Administration User' link. The main content area features a 'New Program' form with the following fields and values:

Display Name:	TrafficInfo
Application Name:	TrafficInfo
Server Address:	MYIPADDRESS
Server Port Number:	8085
Program Name on Server:	TrafficInfo
Use Proxy:	No
Debug Mode:	Disabled
Debug Program On Server:	

At the bottom of the form is a 'Create Program' button. Below the form, there are links for 'Return to: Home page' and 'XML Applications'.

Enter the details as follows:

Display Name: TrafficInfo

Application Name: TrafficInfo

Server Address: *{The IP Address of the server}*

Server Port Number: *{The port number of the traffic info server, default: 8085}*

Program Name on Server: TrafficInfo

Use Proxy: No

All other fields are optional.

Click Create Program. Traffic Info should now appear in the phone's Programs list. To use it, ensure the TrafficInfo server is running (See **4.4 Running the Server**) and Press run when TrafficInfo is selected in the Programs list on your OptiPoint phone.

4.5.2 OpenStage 60/80

This feature has not yet been implemented.

Navigate to the Admin Menu by pressing the Applications Menu button. Enter the administrator password, then navigate to Applications → XML and select Add application.

Enter the following information in the fields:

Display name: TrafficInfo

Application name: TrafficInfo

Server address: *IP address of the server hosting the Traffic Info Application*

Server port: *Port number Traffic Info is listening on (Default 8087)*

Protocol: http

Program name: TrafficInfo/TrafficInfo

All other options are optional.

Save and exit the "New application" screen, navigate to the Applications tab by pressing the Applications Menu key until the tab is displayed. You should now see "TrafficInfo" as an option in the Applications list.

5. TROUBLESHOOTING

Q: Why do I receive an error when I start the application from the phone, saying that it cannot read from the server?

A: This is usually one of two things – either the configuration of the phone has not been set up correctly (See Section 4.5 Configuring the AGP to run Traffic Info) or the server application is not running (See Section 4.4 Running the Server).

Q: I cannot seem to see any Traffic Items, despite having correctly set up filters.

A: This could mean the server application is unable to connect to the traffic news feed which is provided by the BBC. Ensure that all the proxy settings are correctly configured and the server machine can connect to the internet.

5.1 Traffic Info Checklist

Please check you have the following set up:

- TrafficInfo_Setup.exe has been extracted to "C:\"
- "Traffic Info" has appeared in the "Programs" menu from the Start button.
- The server application has been started by clicking the "Traffic Info" file in the "Traffic Info" Programs menu.
- The machine running the server applications is connected to the internet, and the correct proxy settings are configured.
- The phone has been configured via it's configuration pages to have all the correct server and program information for the Traffic Info application

You should now be able to use the Traffic Info Application.

6. APPROVALS

Approval Authority	Arshad Kureshi arshad.kureshi@siemens.com
Author	Stuart Coxhead Stuart.Coxhead@siemens.com

7. GLOSSARY

AGP	Application Generic Platform
GenericMidlet	AGP Midlet for use on the phone
APM	Applications Module
Build	The base software for the phone.
JRE	Java Runtime Environment
XML	Extensible Mark-up Language
TPEG	Transport Protocol Experts Group
BBC	British Broadcasting Corporation

- End of document -